

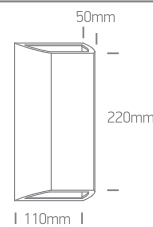
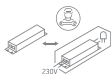
INSTALLATION MANUAL

67512

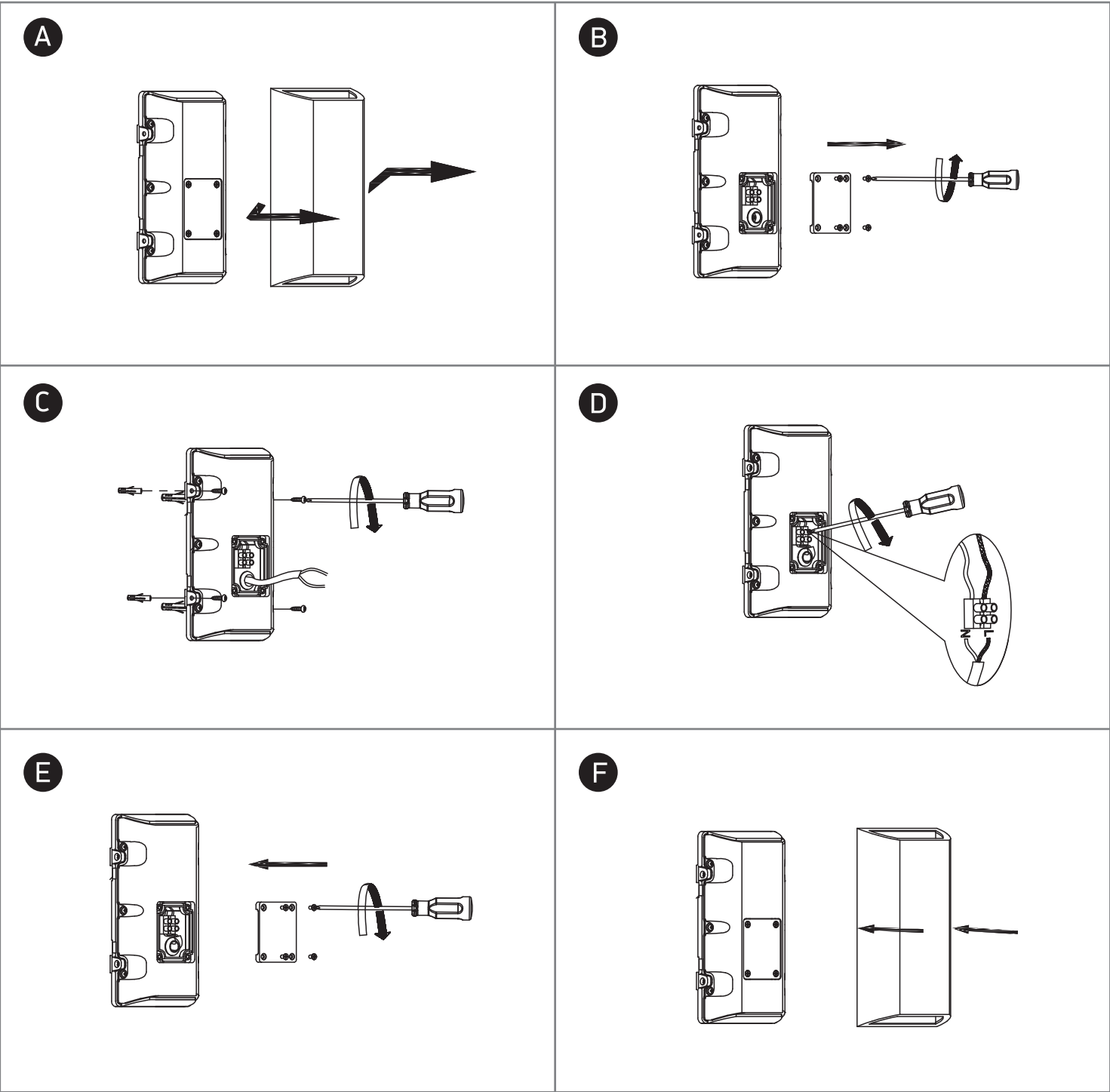


230V | SMD LED | 8W | IP65 | ABS + PC
Complete with 350mA driver.

80
CRI



one
LIGHT



Warnings:

1. Make sure that the product is installed properly before connecting to electricity.
2. Do not cover the fitting.
3. Maintenance and installation should only be carried out by a professional electrician.