

06 Downlights Fixed LED>The Budget Downlight Range

## 10130T/W/W



30W SMD LED recessed downlight, budget range, IP20.

Complete with 700mA driver.

Complies with standard EN60598-1 and any other specific standards.



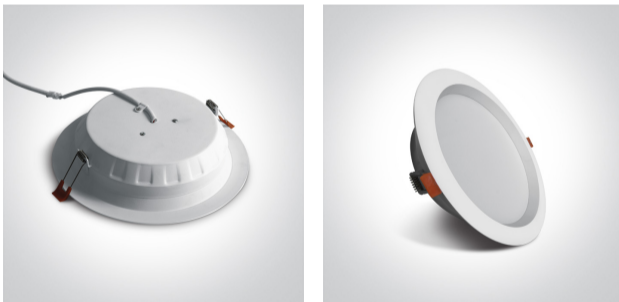
Downloads



Dimensions



Gallery



Physical Specification

Product Type

Item Group

Family

Order Code

Colour

Material

Shape

Gear

06 Downlights Fixed LED

The Budget Downlight Range

10130T/W/W



White


Aluminium



Circular

Height	55mm
Diameter	235mm
Cutout Hole Diameter	210mm
Recessed Ceiling	Yes
Depth Required	75mm
Indoor	Yes
Adjustable	No


## Electrical Characteristics

Gear	External-Included
Fitting + Driver	
Input Voltage	220-240V
50 Hz	Yes
60 Hz	Yes
Safety Class	
Power(Watts)	30W
IP Rating	IP20
Light Source	LED built in
Dimmable	No
F Mark	

Fitting	
Input Type	Constant Current
Input Current	700mA
Voltage	36V
Safety Class	
Power(Watts)	25,2W
IP Rating	IP20
Light Source	LED built in
LED Type	SMD 2835

LED Brand	Sanan
LED Number	60
F Mark	
<b>Gear</b>	
Gear Type	Led Driver
Input Voltage	220-240V
50 Hz	Yes
60 Hz	Yes
Power(Watts)	17,5-29,5W
Power Factor	0,95
Constant Current	Yes
700mA	25-42V
IP Rating	IP20
Safety Class	
Dimmable	No
Housing Material	Plastic
Output Terminal	Cable

### Illumination Data

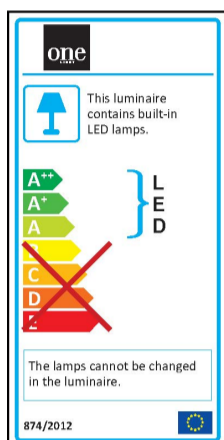
Colour Temperature	3000K
Lumen Output	2100lm
Light Efficiency	70lm/W
CRI	80
Beam Angle	120°
Illumination Diagram	

### Packing Info

Box Length	24,5cm
Box Width	24,5cm

Box Height	6cm
Box Weight	0,64kg
Pcs/Carton	20
Barcode	5291889045847
HS Code	9405409900

## Energy Label



## Certification & Warranty

Warranty	2 Years
Wee Directive	Yes

switch to  
**one light!**

**one**  
LIGHT

