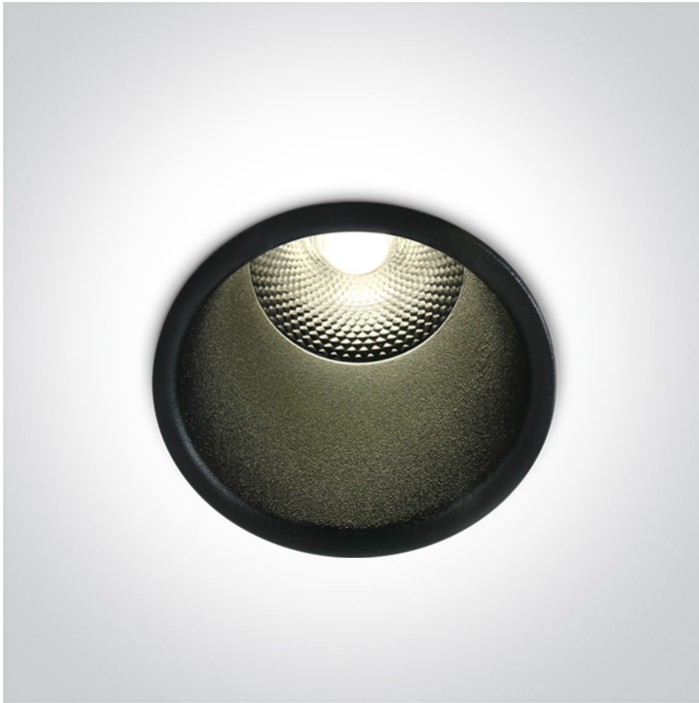


02 Recessed Spots Fixed LED>The Dark Light Pro Range Aluminium

10105FD/B/W



5W COB LED recessed spot, IP20, for general lighting applications.

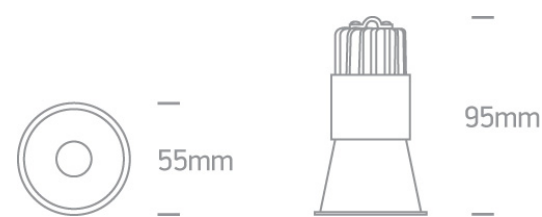
Supplied with non-dimmable LED driver. Complies with standard EN60598-1 and any other specific standards.



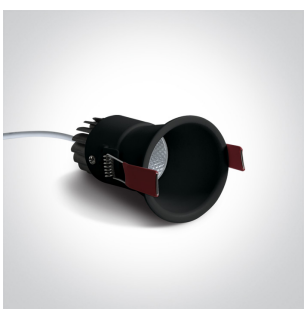
Downloads



Dimensions



Gallery






Physical Specification



| | |
|------------|------------------------------------|
| Item Group | 02 Recessed Spots Fixed LED |
| Family | The Dark Light Pro Range Aluminium |
| Order Code | 10105FD/B/W |
| Colour | Black |
| Material | Aluminium |
| Shape | Circular |
| Height | 95mm |

| | |
|----------------------|-------|
| Diameter | 55mm |
| Cutout Hole Diameter | 50mm |
| Recessed Ceiling | Yes |
| Depth Required | 120mm |
| Indoor | Yes |
| Adjustable | No |

Electrical Characteristics

| Gear | External-Included |
|------------------|---|
| Fitting + Driver | |
| Input Voltage | 220-240V |
| 50 Hz | Yes |
| 60 Hz | Yes |
| Safety Class |  |
| Power(Watts) | 5W |
| IP Rating | IP20 |
| Light Source | LED built in |
| Dimmable | No |
| F Mark |  |

| Fitting | |
|---------------|---|
| Input Type | Constant Current |
| Input Current | 300mA |
| Voltage | 14,9V |
| Safety Class |  |
| Power(Watts) | 4,5W |
| IP Rating | IP20 |
| Light Source | LED built in |
| LED Type | COB |
| LED Brand | Epistar |

| | |
|------------------|---|
| LED Number | 1 |
| F Mark |  |
| Gear | |
| Gear Type | Led Driver |
| Input Voltage | 220-240V |
| 50 Hz | Yes |
| 60 Hz | Yes |
| Power(Watts) | 4,2-7,25W |
| Power Factor | 0,9 |
| Constant Current | Yes |
| 300mA | 14-24v |
| IP Rating | IP20 |
| Safety Class |  |
| Dimmable | No |
| Housing Material | Plastic |
| Brand | LIFUD |

Illumination Data

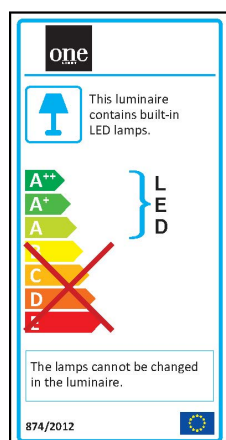
| | |
|----------------------|---|
| Colour Temperature | 3000K |
| Lumen Output | 300lm |
| Light Efficiency | 60lm/W |
| CRI | 80 |
| Beam Angle | 24° |
| Illumination Diagram |  |
| Dark Light | Yes |

Packing Info

| | |
|------------|-----|
| Box Length | 9cm |
| Box Width | 7cm |

| | |
|------------|---------------|
| Box Height | 12cm |
| Pcs/Carton | 50 |
| Barcode | 5291889057352 |
| HS Code | 9405409900 |

Energy Label



Certification & Warranty

| | |
|----------------|---------|
| Warranty | 2 Years |
| Weee Directive | Yes |

switch to
one light!

one
LIGHT

